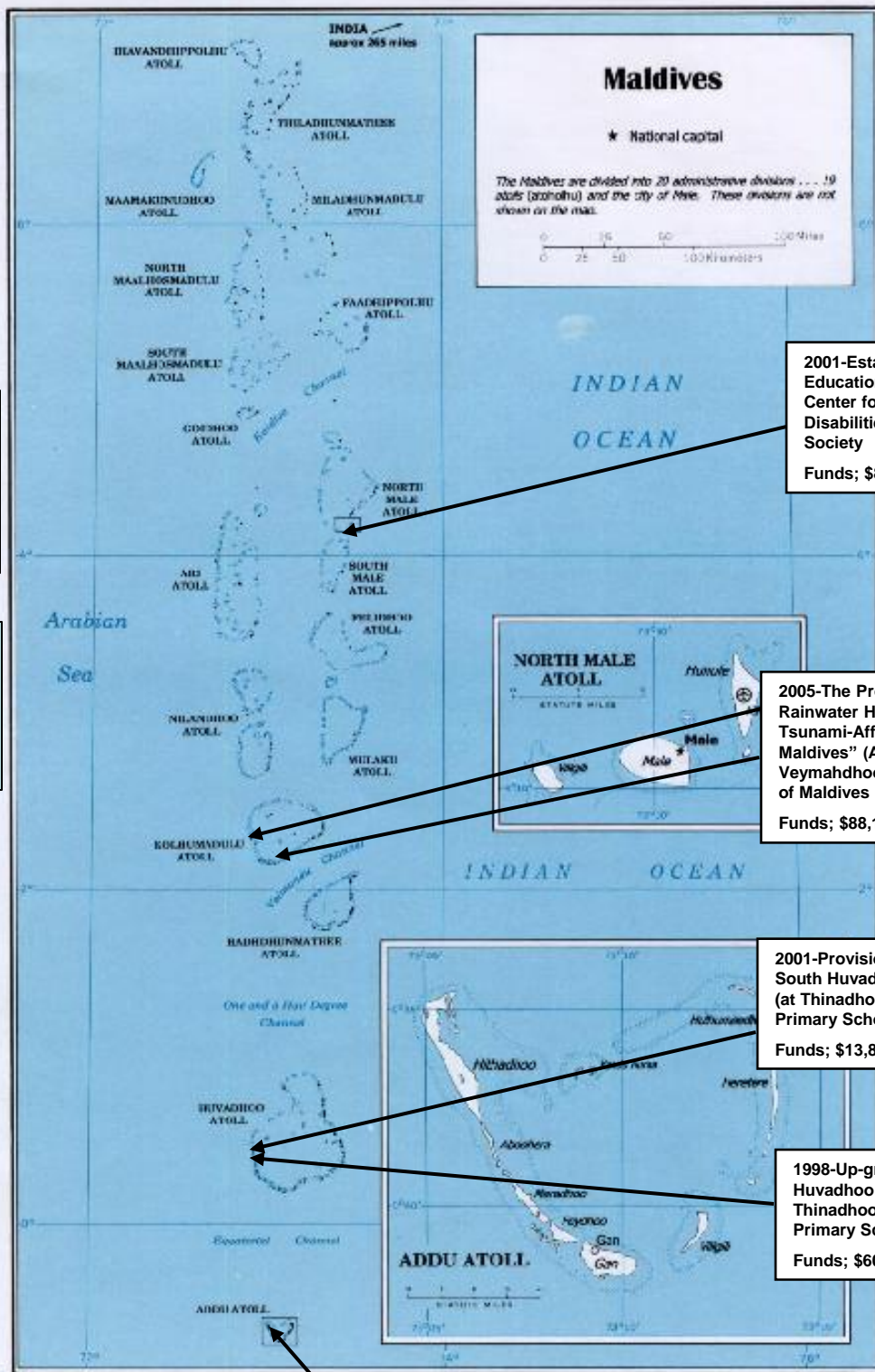


GGP Assistance in Japanese Fiscal Year 1996 to 2009



1999- Construction of Shaikh Abdul Rahman Pre-School – Shaikh Abdul Rahman Pre-School
Funds: \$42,888

1996- Thalassaemia Eradication Project- Society for Health Education
Funds: \$34,900

1996- Expansion of Electrification in Vaikaradhoo Project
Funds: \$74,522

Maldives

★ National capital

The Maldives are divided into 20 administrative divisions . . . 19 atolls (atollhu) and the city of Male. These divisions are not shown on the map.

0 25 50 100 Miles
0 25 50 100 Kilometers

2001-Establishment of Educational and Rehabilitation Center for People with Disabilities” (at Male)- Care Society
Funds: \$89,740,

NORTH MALE ATOLL

STATUTE MILES

Main

2005-The Project for Supporting Rainwater Harvesting System in Tsunami-Affected Islands of Maldives” (At Vandhoo and Veymahdoo) -JICA Alumni Society of Maldives
Funds: \$88,173

ADDU ATOLL

STATUTE MILES

2001-Provision of Equipment to South Huvadhoo Primary School” (at Thinadhoo)- South Huvadhoo Primary School
Funds: \$13,821

1998-Up-grading the South Huvadhoo Primary School” (at Thinadhoo)- South Huvadhoo Primary School
Funds: \$60,176

2007- The Project for Reducing Burdens of Diseases in Rural Maldives” (at Hithadhoo)- JICA Alumni Society of Maldives
Funds: \$76,281